

VIVALDA

The UK & Ireland's number 1 supplier
of leading facade brands, building boards,
fire protection and fabrication services.

high performance

cladding



VIVALDA

bringing construction to life®

Contents

Introduction	03
Product Overview	4 & 5
Services Overview	06
Fabrication	07
Case Study - Fabrication	8 & 9
MetSkin	10 & 11
Equitone	12 & 13
Cedral	14
James Hardie	15
Swisspearl	16
Rockpanel	17
Tonality	18
Trespa	19
Valcan	20
Viroc	21
VBrick	22 & 23
Parklex Prodema & Fundermax	24
Our supplier partners	25
Fortis	26 & 27
MSP Bespoke Metal	28 & 29
Delivery & Logistics	30
Contact & Locations	31

The UK & Ireland's number 1 supplier of leading facade brands, building boards, fire protection and fabrication services.

Introduction

Established in London in 1999, VIVALDA has made a name for itself as the UK's leading distributor of decorative cladding and building boards to the construction industry.

Nationwide Distributor:

VIVALDA offer a fast, efficient and reliable nationwide service, with our central support services situated in Birmingham and fabrication branches in London, Birmingham, Hull, Glasgow & Dublin.

All of our branches hold stock and supply all the major external and internal cladding brands, from high performance rainscreen cladding panels to internal counter top or wall cladding in the most popular colours, as well as building boards and fire boards for immediate delivery.

An increasing amount of our customers also use VIVALDA's in-house cutting and shaping facilities as this improves the accuracy of cut and lead times. With 27+ years' experience, we are the No.1 nationwide distributor for major cladding brands.

Boards can be precision cut to size, shaped, and drilled to meet exact project requirements. Hangers can be pre-attached to facilitate faster, more efficient installation, and all products can be finished to your specified standards. We also offer professional pallet wrapping and clear panel labelling to ensure safe transport and straightforward on-site identification.

Unrivalled Service, Uncompromising Standards:

Our growth is testament to the convenience of having pre-cut building boards and decorative cladding delivered straight to site.

VIVALDA supplies impartial and independent advice on any size project. All of VIVALDA's field representatives are experienced in facade systems and cladding brands and offer advice on technical specifications, size, thickness and colour.

VIVALDA have specialist fabrication centres located at strategic locations in the UK & Ireland. The very latest laser guided beam saws and CNC routing + drilling equipment are used for demanding projects as well as traditional cutting and drilling services. Boards can be cut to size [™], shaped, drilled and finished to any specification. We also offer professional pallet wrapping and panel labelling facilities. VIVALDA provides a complete end-to-end service, with delivery straight to your site.

Require support on your next project?

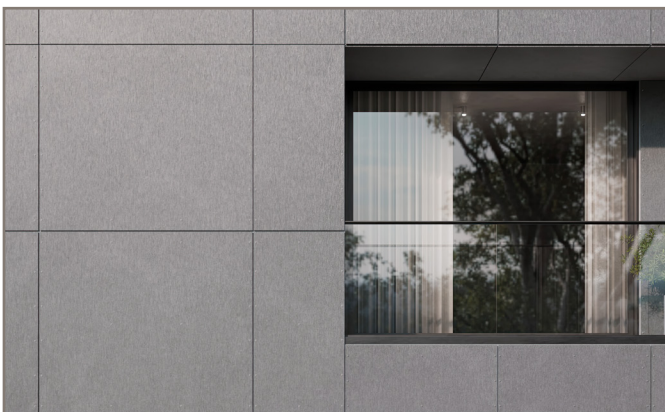
If you require more information on our products or services, or would like to speak to our team about your project, our nationwide teams are here to help.

Product overview



One Stop Shop

There isn't much VIVALDA doesn't know about ventilated facade cladding. We offer expertise in all facade components, including fixing systems, fire barriers, accessories and building boards. As cladding specialists, we can guide you from architect drawing stage right through to labelling and palletising of your cladding panels, ready to deliver to site.



Decorative Cladding

In today's building designs there has been a distinct move to a more dynamic and modern appearance of homes, places of work, and contemporary public and private buildings with clean lines and facades. The range of decorative cladding that VIVALDA distributes allows unlimited creative opportunities for designers to produce aesthetically interesting projects more in line with the modern trend in architecture by moving away from plain flat facades to stepped features and returns with added features such as shading + balconies. This is evident in the appearance of facades, fascias, soffits, gables, eaves and window panels finished with decorative cladding because it not only produces a great look, but offers an economic and maintenance free exterior for the lifespan of the building.



Framing

VIVALDA can guide you to the most suitable fixing method. With a new build project, a fixing method can be designed using an aluminium frame structure onto which the cladding panel can be riveted or hung using a variety of brackets and hanger systems.



Fire Barriers

Fire barriers work by blocking the airflow cavity behind the cladding to allow effective control of a fire by reducing the spread of flame. With many fire barrier products in the market today, VIVALDA supply only the market leading products. VIVALDA can advise on the best fire break system options, based on fire performance and cavity gap requirements.



We pride ourselves on being nationwide specialist composite panel providers, distributing across the UK and Ireland. Our staff have vast experience in working with a diverse product range with a variety of insulation to meet specific project requirements. Our technical support team can offer assistance with selecting the correct products to meet the desired specification and additionally provide assistance on site if required.

Our range of equipment and machinery allows our expert production team to manufacture bespoke composite panels to any specification. This includes fabricating welded and dressed trays to achieve specific U-value thermal requirements.

Our experienced team has extensive expertise in working with a wide range of insulation materials to meet specific project requirements, including our A2-rated panels.



VIVALDA supplies a wide range of insulation boards to the construction industry. We work with leading manufacturers to provide high-performance insulation solutions that help improve energy efficiency, fire protection, and acoustic performance.



VIVALDA offers all the accessories required to fit any brand of exterior cladding panel, including gaskets, profiles, vents, corners, colour matched torx screws and rivets, joints, edge finishes, hangers, rails and adhesive systems.



VIVALDA supplies a wide range of general purpose building boards to the construction industry including moisture resistant boards, fire protection buildings boards, decorative fire protection boards, CP boards, direct render boards, multipurpose boards, and calcium silicate boards.

Services overview



We offer an end-to-end service. Panels are manufactured to suit clients' specific requirements and delivered just in time for installation.

VIVALDA's knowledgeable teams can support your project with guidance on product lines, technical information and fixing systems and accessories such as insulation and fire barriers. Whether you are calling a local branch or require on-site assistance, our teams can provide guidance on product suitability for different requirements such as budget range, building height or even aesthetics.

Bringing construction to life*

VIVALDA are set up to guide you from the elevation drawing stage through to delivery. We are industry specialists offering the widest range of products, latest technology, fully equipped fabrication facilities, technical guidance, site support, in house logistics, owned transport fleets and much more.

Technical Support

Our knowledgeable teams can support your project with guidance on product lines, technical information, fixing systems, and accessories such as insulation and fire barriers. We pride ourselves on our strong relationships with leading manufacturers who provide support from initial enquiry through to installation advice.

In addition, our teams can give guidance on the best type of fixing systems for the project and information on the offsite fabrication services we can offer.

Nationwide Fabrication

Our fully equipped fabrication facilities can shape, drill, bevel, cut and finish panels to almost any specification to suit your project.

Delivery & Logistics

We own and operate our fleet of Euro VI and ULEZ compliant delivery trucks, enabling an efficient service direct to your site.

Precision Engineering

Advanced technology combined with our well equipped fabrication facilities means we produce products to exact specification.

Strict Quality Control

We apply quality checkpoints throughout the fabrication process to ensure each product meets the highest standards.

Sustainability & Waste Management

All processes comply with environmental regulations and industry standards while maintaining sustainability practices. We aim to minimise waste with panel optimisation ensuring cost effective solutions.

Widest Product Range Available

Find everything you need from a single source. We supply cladding panels, building boards, fire protection, framing and accessories to the construction industry. Our range includes our own manufactured aluminium cladding system, MetSkin and our in-house brick slip offer - VBrick. We offer bespoke solutions tailored to meet the specific needs of any project.



Find your nearest fabrication facility

Strategically placed branches across the UK & Ireland mean you are never too far from a beam saw or CNC machine. Speak to our knowledgeable teams today.

Fabrication



Nationwide Fabrication

Our fully equipped nationwide fabrication facilities can shape, drill, bevel, cut and finish panels to almost any specification.

Expert Service

We are committed to providing a superior service to our customers. Our fully equipped fabrication facilities and expert teams are capable of bringing any project specification to life.

Choose from 100's of quality cladding materials and take advantage of our offsite fabrication facilities. Preparing pre-cut panels, holes and fixings offsite can often save you time, money and ensures precision quality every time. You are never far from a CNC machine or a computerised beam saw at our strategically placed branches across the UK & Ireland.

Precision Accuracy:

Advanced technology combined with our well equipped fabrication facilities mean we produce products to exact specification to meet the specific needs of any project.

Our experienced teams fabricate panels and perfectly wrap and label pallets ensuring a safe and efficient delivery to site, ready to be easily installed.

Sustainability & Waste Management

We ensure that all processes comply with environmental regulations and industry standards while maintaining sustainability practices. We aim to minimise waste with panel optimisation ensuring cost effective solutions.

Why Choose Our Fabrication Service?

Precision & Accuracy

We have experience working with the most complex and challenging projects, from unusual, intricately shaped cladding panels to complicated fixing systems. Advanced technology combined with our well-equipped fabrication facilities mean we produce products to exact specification.

Each of our specialist fabrication centres is equipped with two or more CNC machines, enabling all types of drilling, mitred edges and precision shape cutting, and two or more computerised beam saws for clean edges and straight or raked cuts. All machinery is linked to monitored dust extraction systems.

Our investment in our fully equipped fabrication facilities and skilled operatives ensures consistent quality across every project, regardless of scale or complexity. Rigorous quality control procedures are applied throughout the fabrication process, giving customers confidence that every panel will arrive ready for efficient installation on site.



Find your closest fabrication facility

With specialist fabrication hubs & distribution centres in London, Birmingham, Hull, Glasgow & Dublin.

Mill Strand Integrated School & Nursery

Case Study

Project:

- Mill Strand School

Location:

- Portrush

Project Category:

- Education

Project Type:

- New Build

Product Supplied:

- Rockpanel Volcanic Rock

VIVALDA Services:

- Fabrication

Faith in the Future:

Creative cladding inspires pupils at Northern Irish School

Vivalda has been instrumental in the delivery of a unique school project, that reflects its history, while pointing to a vibrant future. Using Rockpanel volcanic rock cladding, Mill Strand Integrated Primary School in Portrush, NI has created a stunning effect to create a unique and highly personal statement of optimism and inclusion.

Faced with the design and construction of a new school, the leadership team was keen to create a legacy of the old school, while embracing the idea of a fresh chapter. As part of that process, Belfast-based graphic recorder and visual facilitator Stéphanie Heckman, who has worked with UNESCO, Friends of the Earth and the British Red Cross, was asked to create several feature facades for the building.

Recently retired head of Mill Strand, Philip Reid, said: "Every school is unique, and more than a building, it is a community. In leaving the old school behind, it was important that the ethos, values and history of the school were preserved and articulated. This rich tapestry needed to be transformed into concise and impactful facades, and literally 'set in stone', using images captured through the life of the school, local landmarks and key quotations, including Mill Strand's four core values."

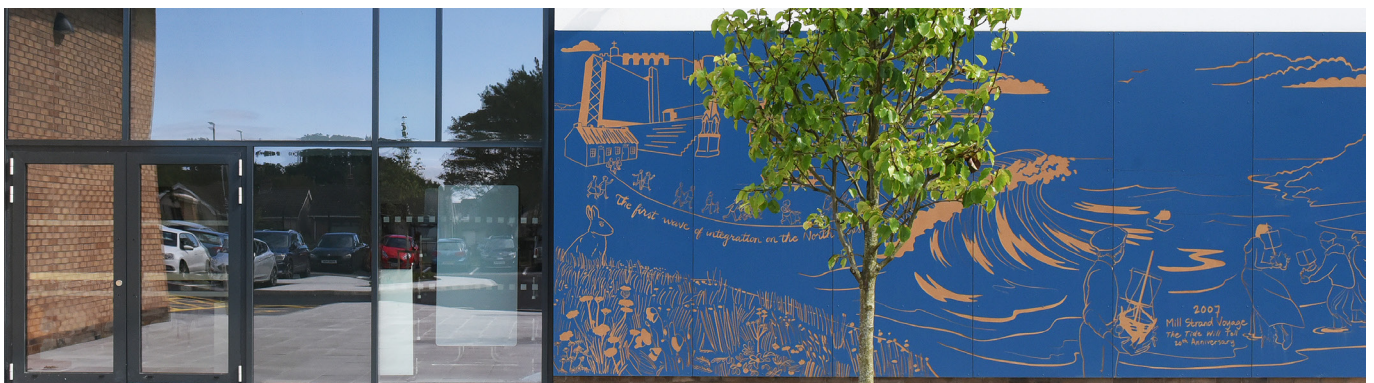
The vision to create

Stéphanie Heckman: "I'd never worked on something of this scale before, or on something with such lasting impact and which clearly meant so much to the client. The murals tell the story of the school's founding, the special connection teachers and pupils felt with Mill Strand, the beach where the school was originally sited and named after, and the core values that drive the staff – in short, the heart and soul of the school."

Born out of the Good Friday Agreement, Integrated Schools in Northern Ireland support an ethos of diversity, respect and understanding across cultures and religions and between those of different socio-economic backgrounds and abilities.

Teamwork – turning the vision into reality

Founded in 1965, Belfast-based Isherwood + Ellis were architects for the project, with Lowry Building and Civil Engineering of County Tyrone, appointed main contractor. Quantity Surveyor Adam Lowry said: "I spoke to Rockpanel's Ann Bone, who was very informative about the material and fixing methods available, and we talked through options, depending on the application. We engaged with Vivalda, who provided complete drawing mark-ups and board rationalisation to minimise wastage. They also supplied panel samples of the CNC laser engraved mural design for client approval."





One stop shop:

There isn't much VIVALDA doesn't know about ventilated facades, this includes the requirements for fixing systems, accessories and building boards that are necessary during install. As cladding specialists, we can guide you from elevation drawing stage right through to labelling and palletising of your required cladding panels.

Vivalda are able to shape, drill, cut and finish panels to almost any specification using leading edge technology, and hand-held tooling. Vivalda Ireland Director, Darren Bowden: "This was certainly one of the most challenging and rewarding projects we have been involved with for many years. The job required the skills of the whole Vivalda Group, including technicians in Ireland, Birmingham and Hull, to fabricate the complex facades."

One of the biggest challenges lay in streamlining Stéphanie Heckman's designs into artwork that could be replicated onto the Rockpanel facades. Having consulted with her, the architect and Vivalda recommended engraving the illustrations onto the board, using 3mm straight cutters to achieve as much detail as possible.

Vivalda's Darren Bowden again: "The actual fabrication stage of this project deserves a mention, given the fact that there were approximately 30 panels involved (some flat, some curved) – each requiring around eight hours to etch. The work demonstrated the importance of technical skill and teamwork"

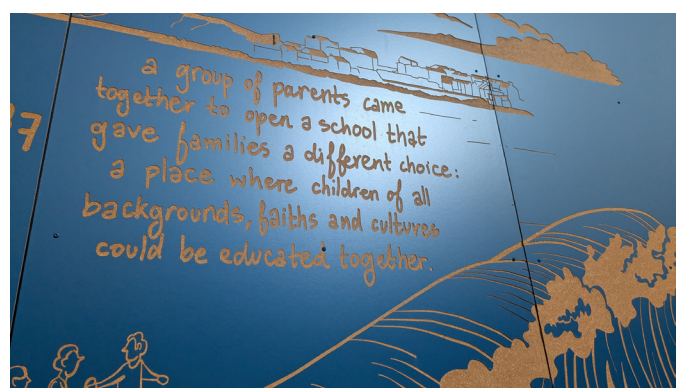
GC Joinery installed the facades at the school. Managing director Gordon Cairns explained: "We found the process of installation very satisfying. Detailed drawings were supplied, along with a labelling system which simplified the process. The high quality pre-bored panels fitted accurately into place, with one or two minor adjustments being easily carried out on site with simple tools. I know that everyone is very pleased and proud of the finished work."

A special project

Rockpanel Specification Manager, Ann Bone, commented, "What a special project to be part of, and one where many of the features that make Rockpanel unique, were able to shine. The lightweight boards are non-combustible, highly resilient to weather and can be routed, perforated and curved to realise even the most ambitious creative concepts and specifications. Four RAL-matched colours were used at Mill Strand. Working as a team, Stéphanie, the architect, main contractor, installer and ourselves were able to create something the school and the wider community can be proud of, as part of their story."

Stéphanie Heckman: "The murals are the face of the new school, the first thing anyone sees when they come to visit, to work or to learn, each day. They trusted me with the design from start to finish, and together we crafted a visual narrative that will last decades."

Vivalda's Darren Bowden concludes: "This project really shows how creativity and teamwork can create stunning results. More architects and developers are approaching us to help them realise often complex facade designs – and this is a trend that we see growing as they realise the true potential of rainscreen facades."



MetSkin

Powder Coated shaped aluminium cladding panel range

Selsdon Way

Designed with Contractors in mind

MetSkin is an outstanding aluminium rainscreen cladding solution that meets all aesthetic and technical requirements for a building facade, offering a perfect blend of durability and sustainability.

MetSkin opens up a world of design possibilities for architects and contractors alike. With its sleek, modern appearance and clean lines, it effortlessly enhances the visual appeal of any structure, be it a new build or a remediation project. Whether you're working on a residential high-rise, a commercial complex, or a public facility, MetSkin is the ideal choice for creating an impressive facade that leaves a lasting impression.

The MetSkin range consists of three primary system types: the Hook-on Cassette System with Secret Fixings, the Tray Panel System with Discreet Fix, and the Interlocking Plank System with Concealed Fix. Each system is engineered to offer unique benefits and adaptability to a wide range of architectural styles & are composed of meticulously designed components, including cassettes, panels and planks, engineered to facilitate easy installation, structural integrity, and aesthetic coherence. The three systems are designed to fit back to off the shelf support rails & brackets. This means there is no need for special C channels, mullions or bespoke hanging systems, making MetSkin systems easier to order, quick to supply and easier to locate and install on site.

MetSkin panels can be perfectly colour-matched to all profiles, thanks to our in-house powder coating facilities and approval by the major powder coat manufacturers.

Product Features & Benefits:

- Fully tested to CWCT standards
- Versatile panel designs
- Exceptional weather resistance
- Exceptional impact resistance
- Thermal and acoustic insulation
- UV resistance

The MetSkin systems are designed to fit back to off the shelf support rails + brackets for all our panel systems. This means there is no need for special C channels, mullions or bespoke hanging systems, making MetSkin systems easier to order, quick to supply and easier to adjust & install on site.

MetSkin Hook-on:

The Hook-on Cassette System presents a contemporary approach to facade design.

Featuring a sleek appearance, this system employs fully concealed fixings to maintain clean lines and a modern aesthetic. The invisible fixing hook-on system has been expertly designed to ensure each panel can be removed individually for cleaning and maintenance if required.

MetSkin's vertical rails have two built-in hooks to receive the panels. This design allows for a narrow cavity, as the hook can be fitted to almost any flat surface—particularly useful in soffit applications or reduced cavity zones. MetSkin also offers the option of a half rail profile with a 40mm face.

The front can be doubles or singles as required for speed of installation. The hooks can be installed just before the panels to ensure a perfect line-up positioning, allowing for 'as-built' / tolerances.



MetSkin Tray Panels:

The Tray Panel System offers a harmonious blend of functionality and visual appeal.

Each panel is individually secured to the substructure using discreet fixings, ensuring efficient installation while preserving an uninterrupted appearance. The panel design allows for customisation in terms of dimensions, shapes, and finishes, granting architects and designers creative freedom to meet project-specific requirements.

The attachment of each panel to the substructure employs discreet fixings that maintain the facade's clean lines and visual harmony. While discreet fix systems are often chosen for tighter budgets, they do not compromise on quality or aesthetics. The strategically placed, colour-matched fixings within the recessed panel joints create a seamless finish and hide the fixing head.



MetSkin Planks:

The Interlocking Plank System offers a versatile solution with its interlocking design, providing both structural stability and design flexibility.

The planks are designed to fit seamlessly together, creating a continuous facade surface. This system is particularly well-suited for projects where a dynamic appearance is desired and offers a cost-effective solution for a sleek linear finish. The design of the Interlocking Plank System ensures structural stability through its interlocking mechanism. The planks are crafted to securely fit together, forming a continuous and visually engaging facade. Their interlocking profiles contribute to the facade's robustness and aesthetic appeal, allowing for dynamic architectural designs.



Sizes

- 3490mm x 3460mm
- 3440mm x 3510mm
- 3900mm x 500mm

*Max sizes

Thickness + Grade

- 2mm
- 3mm
- 1050 series
- 3000 series

Finishes

- Anodised Aluminium
- PVDF Pre-Coated Aluminium
- Powder Coated Aluminium

Equitone

Fibre cement cladding panel range



Bon Secours Hospital

EQUITONE is one of the leading providers of roofing and cladding solutions to the construction industry.

EQUITONE is at the forefront of the design, development and supply of lightweight rainscreen cladding and fixing solutions. With a vast range of subtle and inspiring colours in a variety of textures and finishes, EQUITONE fibre cement cladding systems offer a vast portfolio of aesthetic and performance features for every type of rainscreen application across all sectors.

Cladding is a fast-track, sustainable solution for both refurbishment and new build projects. It is also a dry construction process that aligns well with modern methods of construction, offering both contemporary and flexible design options.

EQUITONE is committed to the cost effective and sustainable manufacture of high quality, high performing cladding systems. With the energy saving measures in force today, rear ventilated cladding systems are gaining an ever-increasing economic importance in both old and new buildings. No other wall construction is currently able to fulfil the growing need for heat retention, damp avoidance, noise insulation and fire protection.

VIVALDA, the UK's leading distributor of EQUITONE, offers the entire range of EQUITONE Fibre Cement panels; [lunara], [linea], [natura], [tectiva] and [pictura] cladding panels.

EQUITONE [lunara] is a through coloured panel. The surface of the panel is characterised by a randomised textured finish that is unique to EQUITONE [lunara]. The panel receives a hydrophobation that makes the panel water repellent.

EQUITONE [linea] is a unique 3D shaped, through-coloured facade material that plays with light and shadow. The board displays a linear surface that highlights the raw inner texture of the core fibre cement material.

EQUITONE [natura] is a through-coloured cladding panel with a clearly visible yet subtle fibre cement matrix. [natura]'s tactile and smooth surface allows the natural texture of the fibre cement finish to be seen through the semi-translucent coating.

EQUITONE [tectiva] is characterised by fine sanded lines and naturally occurring hues within the material that enhance the natural matt appearance which comes to life with the effects of light and shade, making each panel unique in colour, texture and surface.

EQUITONE [pictura] is a fibre cement facade material with an ultra matt architectural finish. Lightweight yet strong, the [pictura] surface is smooth and easily cleanable and also provides protection against graffiti produced by common aerosol and other paints.

All EQUITONE fibre cement panels have a fire classification of A2-s1,d0 and a life expectancy exceeding 50 years.

Product Features & Benefits:

- Fire Classification A2-s1,d0
- Weather Resistant
- Economical & Environmentally friendly
- Resistant to mould, fungi & insects
- EPD & BBA certified
- Maintenance free



Hong Kong Museum of Art

Sizes

- 2500mm x 1220mm
- 3050mm x 1220mm
- 2500mm x 1250mm
- 3100mm x 1250mm

Thickness

- 8mm
- 10mm
- 12mm

Finishes

- Matt
- Smooth
- Ridged
- Structured
- Depth
- Rough
- Natural
- Fine Sanded Lines

Equitone

Bon Secours Hospital,
Tralee, Kerry

Case Study

Project:

- Bon Secours Hospital

Location:

- Tralee, Kerry

Project Category:

- Healthcare

Project Type:

- New Build

Product Supplied:

- Equitone [Linea], Equitone [Lunara],
Nvelope & Wraptite

VIVALDA Services:

- Fabrication

Kerry Hospital project showcases full range of Vivalda skills.

Vivalda Ireland has supplied more than 2,000m² of pre-cut, pre-drilled and installation-ready Equitone cladding to a project that is believed to be the most extensive use of this product in the country.

Completed in late 2024, the surgical day care centre at Bon Secours Hospital in Tralee, Co. Kerry, demonstrates the highly effective use of off-site fabrication techniques to achieve world-class quality for public sector projects. Using both Linea and Lunara fibre cement facade boards in Pebble Grey, the finished envelope of the building looks modern, clean and robust.

The main entrance of the unit uses Linea panels, precision cut into varying sizes of triangles to create a pleasing decorative flourish. While the base of the hospital uses secret-fixed, 10mm thick Linea to create a high quality, tactile feel, higher levels utilise Lunara, which is rivet fixed using colour matched rivets.

Designed by O’Connell Mahon Architects and built by main contractor Eamon Costello, the Bon Secours project provided Vivalda with an ideal opportunity to demonstrate its full range of skills. While all Equitone boards were cut to size at Vivalda’s Naas branch, using the latest CNC cutting technology, all cladding materials were supplied, just in time, with pre-fitted brackets, aluminium rails and colour-matched rivets.

This approach eliminated any wastage and ensured an efficient, timely delivery of cladding on-site. Providing a complete, one stop shop service to Costello, Vivalda also supplied Wraptite breather membrane to the project, ensuring an efficient cladding installation process.

Darren Bowden, director at Vivalda Ireland, said: “This was a fantastic project for us, as it showcases the full range of services Vivalda can offer to contractors faced with more technically challenging facade designs. Using our on-site facilities to pre-cut Equitone boards to exacting tolerances, we were able to take away the headache of trying to undertake such a demanding process within a relatively small construction site.

“The clever use of Lunara fibre cement panels for the upper parts of the building – and the ribbed Linea for the lower sections enabled the architects to deliver an aesthetically pleasing facade, while keeping within budget. Using rivet fixed smooth Lunara for the top of the structure and secret-fixed Linea for the bottom generated significant savings, while not compromising either safety or style.”

Both Equitone Linea and Lunara are supplied in 10mm thickness with a wide range of through colour options. Manufactured in the EU, both products are classed as ‘non-combustible’ with an A2-S1-d0 rating as per BS EN 13501-1.



Cedral

Painted fibre cement cladding panel range



Cedral Click

Elevate your building's aesthetics with Cedral's exceptional fibre cement cladding. Offering premium quality across four unique collections, Cedral provide the perfect blend of durability and sophistication.

Cedral looks like natural timber and is a low maintenance alternative to PVCu. Easy to install and maintain & standing up to the harshest conditions, A2-s1,d0 fire rating, immune to pests and insects & water protected panels which means the planks won't drip, warp or distort- unlike timber with a comprehensive selection of aluminium trims.

Cedral Weatherboard fibre cement offers both contemporary and flexible design options, and is used by many architects and homeowners to create stunning facades. The simple combination of wood cellulose, sand, synthetic fibres, water and cement make fibre cement one of the most environmentally friendly and comprehensive building products available.

The material's multi-layered fibre structure supports the cement and other elements, which gives it impressive strength, and means that it can be far thinner than concrete.

Cedral Click is the UK's first fibre cement flush fitting tongue and groove weatherboard product and can be fitted vertically or horizontally, creating a contemporary flat finish. Supplied with a simple 'Click Clip System' which makes installation quick and easy, making it ideal for both new and refurbishment projects.

Cedral Lap is a low maintenance fibre cement weatherboard designed to be fitted in a traditional lapped style. Offering a cost-effective solution to a classic shiplap design. Overlap horizontally or vertically to create deep shadow lines or fit with an open joint for a minimalistic look.

The fibre cement planks are water and frost resistant and do not soften or deteriorate, fire resistant and resistant to rot and insects. Discover a range of colours providing an aesthetic option to suit most project requirements.

Cedral panels and colour-matched accessories are stocked across VIVALDA's national branch network, with delivery in up to 48 hours*. Get in touch with your local branch to learn more.

*Subject to availability.



C10 Sky Blue - Cedral Lap



C18 Slate Grey - Cedral Click Smooth

Product Features & Benefits:

- A2-s1,d0 fire rating
- Low maintenance
- Extensive selection of colours
- Colour matched accessories
- Easy to install
- Resistant to damp and bacteria

Sizes

- 3600mm x 186mm
 - 3600mm x 190mm
 - Board - Ranging from 200 to 400mm x 2500mm
- *Larger soffit sizes available upon request

Thickness

- 12mm
- 10mm
- 9mm

Finishes

- Natural
- Smooth
- Matt
- Timber effect

James Hardie

Fibre cement panel range



Hardie Panel

Designing forever homes and exceptional buildings.

James Hardie makes high performance fibre cement cladding, trim, and backer board products that offer fire, water, weather, pest and rot resistance.

The durable, low maintenance and innovative products are made from natural and sustainable raw materials, delivering endless possibilities of design and aesthetics to consumers.

Fibre cement cladding is a durable, long-lasting and low-maintenance material that's used on residential houses and some commercial projects. It's a semi-rigid material that provides substantial protection, while still maintaining some flexibility.

James Hardie products enable endless possibilities for designing exceptional buildings whilst also delivering protection and long-lasting beauty. James Hardie offer A2 fire rated coloured facades through Hardie® Plank, Hardie® VL Plank and Hardie® Panel products.

Hardie® Architectural Panel & Hardie® Panel cladding makes bringing beautiful designs to life both safe and affordable.

Hardie® VL Plank cladding ushers in a new era of contemporary facade solutions. Its chic, distinctive design and timeless flat finish epitomises modern, durable beauty, perfect for both horizontal and vertical installation.

Unique fibre cement texture with a metallic look Hardie®. Sparkling metallic pigments in the surface combined with the unique structure making the appearance unique.

Product Features & Benefits:

- A2, s1-d0 fire rating
- High performance
- BBA certified
- Low maintenance & Long lasting
- Easy installation
- Meets all modern building regulations



Arctic White & Mountain Sage



Reggio Emilia

Sizes

- 3038mm x 1210mm
- 2428mm x 1210mm
- 3048mm x 1220mm
- 3600mm x 214mm
- 3600mm x 180mm

Thickness

- 8mm
- 11mm

Finishes

- Smooth
- Brushed Concrete
- Metallics
- Cedar
- Smooth Sand

Swisspearl

Fibre cement panels



Moskenes Service, Norway

The Swisspearl range of fibre-cement claddings offer a choice of panels with strong technical specifications.

Swisspearl panels are virtually maintenance free and provide a natural look and feel. Each panel combines strength with ease of handling and a selection of stylish versatile colour options, making them ideal for any facade.

The secret behind the impressive strength of Swisspearl's fibre-cement sheets results from the manufacturing process. Laminates of fibre cement sheets are layered and compressed under tremendous pressure after which the sheets undergo a slow curing process. Reinforced by specially selected fibres, the many thin layers give fibre-cement strength with few equals in the world of building materials.

A major advantage of Swisspearl fibre-cement cladding is its ability to resist weather of all kinds. Frosts and thaws, intense heat, drenching - none of these pose a threat to fibre-cement facades. Fibre-cement sheets retain their shape at all times, and their ability to resist rot and fungal infection is equally impressive. All of Swisspearl facade materials have a fire classification of A2-s1,d0.

The result is a durable facade with minimal or no maintenance requirements.

Each Swisspearl range has its own unique features:

Swisspearl Patina Original NXT range comes in a range of timeless colours and the facade boards will patinate beautifully over time, adding an aesthetic look to the building design with some unique and subtle variations on the surface.

Carat creates clear expressiveness through a translucent, lightly pigmented surface.

Depending on the time of day and the angle of view of the Gravial range it creates an impressive play of light and shadow, the colour line moves in soft grey tones from white to black.

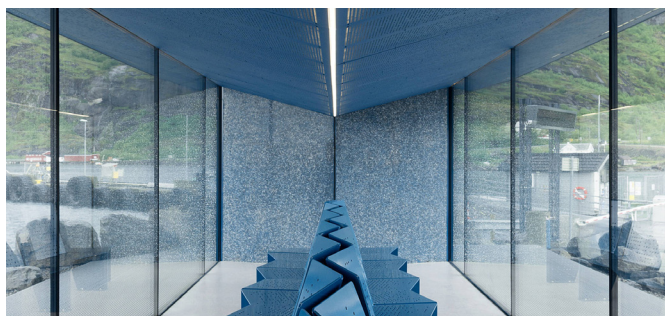
Planea can be used to create a colour-intensive building envelope that brings a bright contrast to the surroundings.

Terra allows buildings to merge with their natural surroundings, giving them an approachable warmth and comfort without losing their strength and expressiveness.

The sophisticated shades of Nobilis create an effortless aesthetic and elegant lightness. As a naturally dried and lightly pigmented fibre cement panel, Nobilis is restrained and precisely because of this becomes an aesthetic eye-catcher.

Product Features & Benefits:

- Non-combustible
- Moisture resistant
- Low maintenance
- Impact resistant
- Durable
- Eye catching designs



Moskenes Service, Norway

Sizes

- 2500mm x 1250mm
- 3050mm x 1250mm
- 2500mm x 1192mm
- 2500mm x 1250mm
- 3050mm x 1192mm
- 3050mm x 1250mm

Thickness

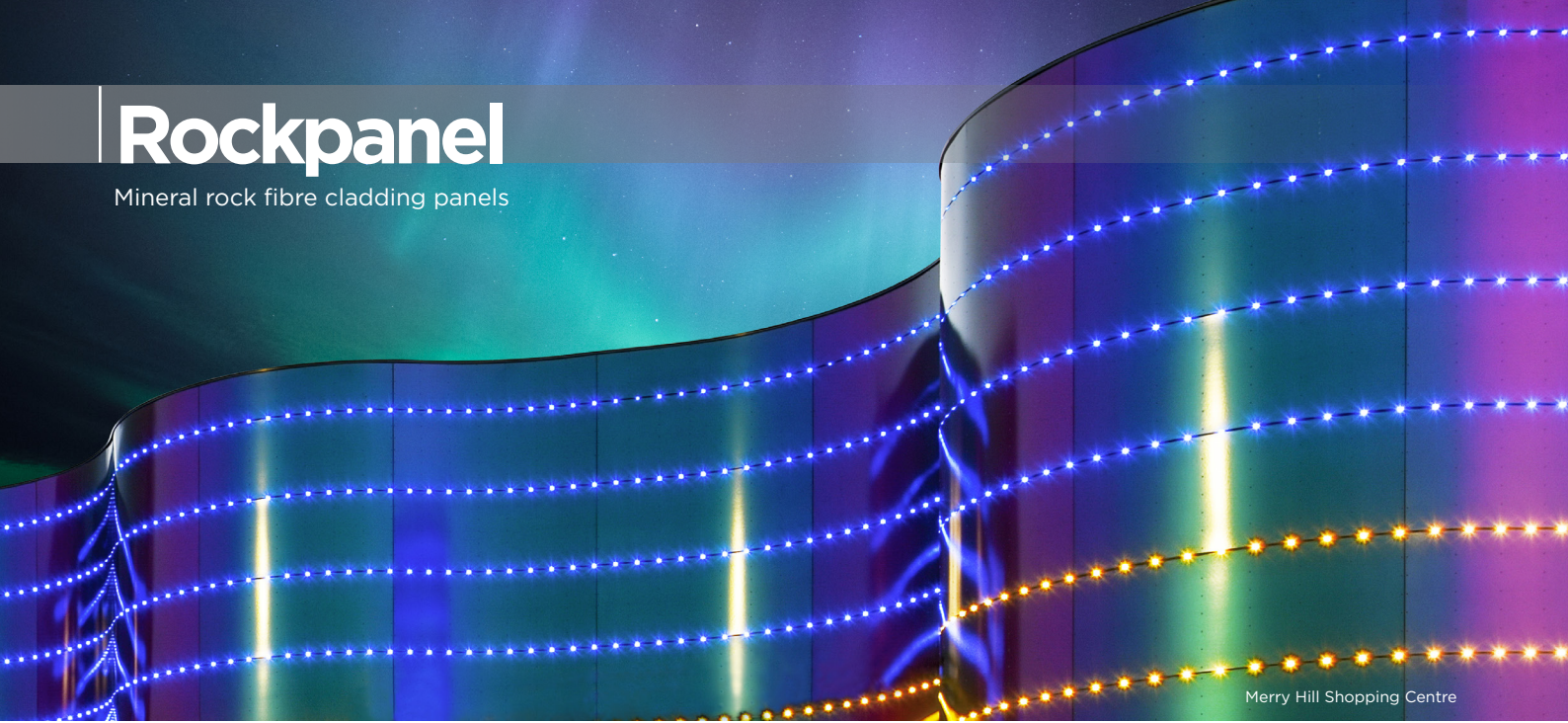
- 8mm
- 9.5mm
- 12mm

Finishes

- Textured surface
- Linear grooves
- Translucent, lightly pigmented coating
- Iridescent, opaque coating
- High-resistant coating
- Strongly pigmented coating

Rockpanel

Mineral rock fibre cladding panels



Merry Hill Shopping Centre

Rockpanel is a sustainable board material which is mostly used in ventilated constructions; facade cladding, roof detailing, soffits and fascias.

Rockpanel is manufactured from the sustainable resource, basalt rock. Therefore, Rockpanel products combine all the benefits of stone and wood in one. Rockpanel is a flexible and robust board which can be applied easily in any shape or form. Rockpanel boards offer limitless design possibilities, thanks to their flexible dimensions and vast range of colours.

Plus, Rockpanel is produced from a sustainable resource with unique properties resulting in durable, workable and very low maintenance boards. Rockpanel can be processed as easily as wood, and it has a light weight nature, thus keeping your construction and installation costs down.

Rockpanel is 100% weather, temperature and UV proof, and it is low maintenance. Guaranteed by the manufacturer, Rockpanel boards are treated with a water-based coating that keeps their appearance, colour and finish for years to come.

Rockpanel board material is available in different colours and different designs. Each product has its own beautiful characteristics. Ideal for facades, roof-edge applications or for special details like ceiling, entrances or infilling. Classic or bold, restrained or playful, charming or idiosyncratic – with Rockpanel board material you will give every house or industrial building a unique look.

The full Rockpanel range, includes: Rockpanel Colours, Rockpanel Woods, Rockpanel Metals, Rockpanel Chameleon and Rockpanel Stones.

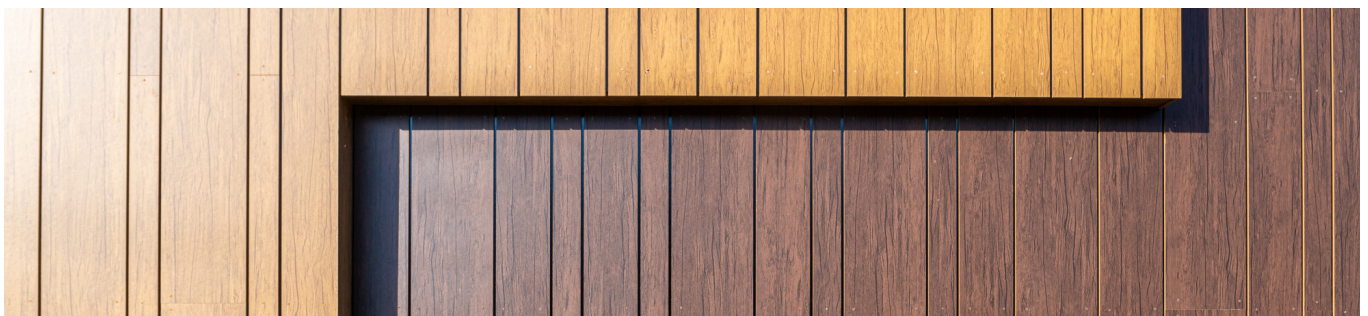
Product Features & Benefits:

- A2-s1-d0 Fire Rated
- Excellent Colour-fastness
- Low maintenance
- UV & moisture resistant
- Durable & Robust
- Quick & Easy Installation



Doncaster Civic Quarter College

Rockpanel Woods



Sizes

- 2500mm x 1200mm or 1250mm
- 3050mm x 1200mm or 1250mm

Thickness

- 8mm
- 9mm
- 11mm (For mechanical secret fix)

Finishes

- Smooth
- Textured

Tonality

Terracotta



Sanctuary by Sekisui House

Vivalda is the exclusive UK & Ireland distributor of German-made TONALITY® terracotta tiles. Made from world-renowned Westerwald clay TONALITY® tiles are lightweight, highly durable and long lasting.

Limitless possibilities: One of the most sophisticated tasks of architecture is to ensure that buildings not only provide space to live in, but that they also become a part of our living spaces. Built structures influence the people using them and their surroundings through their shape and design.

As individual as your ideas: The use of TONALITY® ceramic facades will lead to the creation of expressive buildings, which will meet the highest requirements with regard to aesthetics, fire protection, durability and workability.

When design meets ceramic: TONALITY® is characterised by simple elegance, a wide range of colour design options and a lively surface structure. In line with this philosophy, they developed a state-of-the-art facade that gives buildings that certain something. The design line is ideal for customers with a high level of quality awareness who are looking for something special and appreciate exclusive concepts.

TONALITY® tiles are lightweight, highly durable and long lasting. With a wide range of colours, surfaces and formats, there is no limit to the design of facades. The low dead weight allows for a light substructure as well as flexible and quick installation.

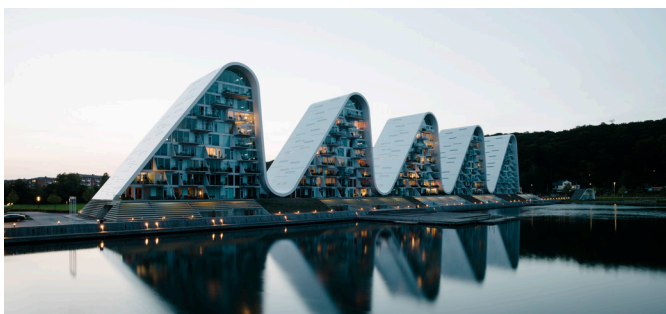
TONALITY® is ideal for lamella, baguette and brise soleil applications. Thanks to TONALITY® adaptive and base clinch rail systems, facade installation is stress-free and fast.

Product Features & Benefits:

- A1 Fire Rated
- UV & Frost Resistant
- Impact & Scratch Proof
- Fast & Easy installation
- 100% Natural
- Maintenance Free



The Wave - Vejle, Denmark



The Wave - Vejle, Denmark



Robert Jungk Comprehensive School

Sizes

- 300mm x 150mm
 - 1600mm x 400mm
 - 2000mm x 600mm*
- *Available upon special request

Thickness

- 22mm
- 26mm

Finishes

- Smooth
- Grooved
- Single Pilaster strip

Trespa

High pressure laminate panels (HPL)



Trespa

Trespa® International is a world leader in the development, manufacture and supply of high performance, high quality panels for exterior cladding and decorative facades. Using proprietary technologies for the production of exceptionally durable products, Trespa® strives to set new high standards in building designs.

Trespa® panels meet key safety and environmental standards for building projects and are manufactured and tested to the highest national and international standards. Providing architects, designers, installers and users with innovative, aesthetically pleasing and high-performance solutions to meet specifications for almost any building application.

The extensive range includes Meeon® Uni Colours, Meeon® Wood, Meeon® Metallics, Meeon® Lumen, Meeon® Focus and TopLab®

Trespa® Meeon® performs exceptionally well outdoors and it stays looking great for many years. The high performance panel is available in many standard colours, finishes, sizes and thicknesses and even custom-made project colours. To create facades that are even more individual and expressive, Trespa® Meeon® panels can be custom-made in special project colours.

Trespa® offer a range of Scientific Surface Solutions which are represented under the umbrella brand TopLab®. The compact high pressure laminate (HPL) surface brings a fusion of artistry engineering into demanding interior environments. Offering an extensive selection of colors, patterns, and panel thicknesses, making it suitable for a complete interior fit-out. Whether for wall lining, worktops, lockers, cabinetry, or partitions, these panels ensure optimal performance throughout your entire interior.

Product Features & Benefits:

- Weather Resistant
- Moisture Resistant
- UV Resistant
- High Impact Resistance
- Colour stability
- Low Maintenance
- FR Rated



Biofortuna Ltd, Deeside



Trespa® Meeon® Satin



Pura NFC

Sizes

- Meeon - 3650mm x 1860mm
2550mm x 1860mm
3050mm x 1530mm
4270mm x 2130mm
- TopLab - 2550mm x 1860mm
3050mm x 1530mm
3650mm x 1860mm

Thickness

- Meeon - 6mm
8mm
10mm
13mm
- TopLab - 13mm - 25mm
16mm
20mm

Finishes

- Meeon - Satin
Matt
Rock
Specular
Diffuse
Oblique
- TopLab - Crystal Matt



Kelly House, Harrow

Valcan design and manufacture fully tested A1 and A2 certified rainscreen cladding solutions. As a leading manufacturer of rainscreen cladding panels, they offer a range of distinct types of materials, including aluminium and fibre cement.

Vivalda supply CERMAPANEL®, VITRADUAL®, VITRANAMEL®, EVVERLAP® and XTRAL®. The wide range of products are all A-rated to BS EN 13501-1 and can be used on any height building.

CERMAPANEL® is an excellent acoustic dampening solution in high demand for sound-proofing and has been used for International Airports and tunnel linings across the globe for this very reason. The panels are reinforced with mineralised cellulose fibres and through coloured, with smoothed surface and rectified edges.

VITRADUAL® is an A1 rated, high impact resistant solid pre-coated aluminium panel providing exceptional durability.

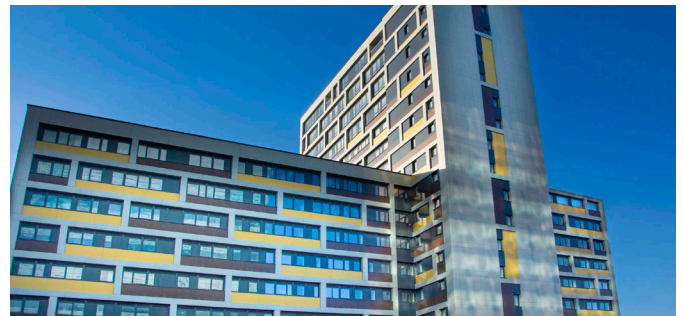
VITRANAMEL®, is a prefabricated steel cassette panel system featuring a vitreous enamel finish which is applied using a special static powder enamelling process.

EVVERLAP®, is a non-combustible fibre cement weatherboard using cellulose fibres for additional strength and finished in a smooth face or a teak wood grain effect.

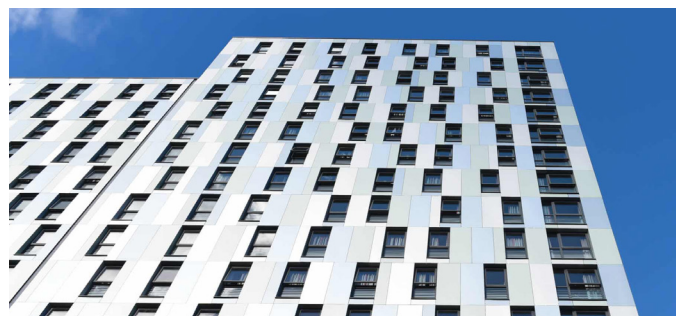
XTRAL®, interlocking aluminium panels are designed to be installed in a ventilated rainscreen system in order to create the free circulation of air behind the panels.

Product Features & Benefits:

- Low Maintenance
- High Durability
- Non-combustible
- BBS Accredited
- Weather Resistance
- Versatile



Impact House, Croydon



Piccadilly Point, Manchester



Iq Student Accommodation, Bristol

Sizes

- Vitradual - 3200mm or 4000mm x 1000mm, 1250mm or 1500mm
- Cermapanel - 2500mm x 1200mm, 3000mm, 3050mm x 1250mm
- Everlap - 3657mm x 210mm
- Vitranamel - Up to 3000mm x 1400mm
- Xtral - Up to 6000mm *Custom sizes available*

Thickness

- Vitradual - 2mm, 3mm
- Cermapanel - 8mm, 10mm, 12mm
- Everlap - 8mm
- Vitranamel - 0.7mm, 1.5mm

Finishes

- Vitradual - Stone effect, Wood effect
- Cermapanel - Through coloured natural finish
- Vitranamel - Enamel
- Xtral - Mill finished, Pre-finished paint



Viroc Cement Bonded Particle Boards

Viroc® is a composite material, created from a compressed and dry mixture of pine wood particles and cement. It combines the flexibility of wood with the strength and durability of cement, allowing a wide range of applications both indoors and outdoors. Its natural appearance can be finished to suit varied architectural needs, with either a raw, polished or sanded appearance.

The production of Viroc® panel complies with the specifications of BS EN 634 and BS EN 13986 standards and carries the CE marking certificate.

The Viroc® panel has a heterogeneous appearance with different shades randomly dispersed, resulting from the natural colours of the raw materials used and the chemical reactions.

Tone differences may be observed on the same face, between the faces of the same panel or between different productions batches.

The cement bonded particle boards offer a cost-effective, natural facade solution with a wide variety of applications. Combining the strength and durability of cement with the flexibility and workability of wood.

Viroc® cement bonded particle boards are used widely by architects, designers and installers for its many benefits.

VIVALDA are proud to be an official UK stockist of Viroc®.*
Contact your local branch for current stock availability.

*Subject to availability.

Product Features & Benefits:

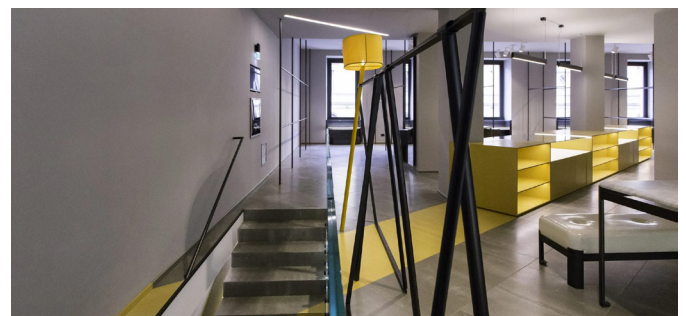
- Non toxic
- Soundproof
- Easy installation
- Fungi resistant
- Fire resistant
- Durable



White Viroc® Board



Dental Office, France



Viroc panels used for flooring.

Sizes

- 2600mm x 1250mm
- 3000mm x 1250mm

Thickness

- Black & Grey - 8mm to 32mm
- White, Ochre, Yellow & Red - 12mm, 16mm

Finishes

- Raw - Grey
- Polished - Black, Ochre, Red, White & Yellow

VBrick

Brick slip cladding system



VBrick is a unique brick slip and stone facade system, that combines the natural beauty of real genuine brick and natural stone, with cost-effective fast-track installation.

The VBrick facade system is comprised of genuine extruded brick and stone slips, specially designed to fix mechanically into an extruded 3 course anodised aluminium backing section.

These extruded sections are installed in horizontal rows onto the backing structure and the brick slips are inserted into place.

This mechanical 'insertion' feature ensures a high strength facade whilst enabling some adjustment of the brick slip position during installation.

VBrick offers a facing brick or stone finish for projects where a facade system is required, rather than traditional masonry.

VBrick brings exciting new and existing colour and texture combinations to the market with the possibility to match traditional brickwork including linear & T2 metric classified bricks.

Designed to blend with or complement new build or refurbishment projects. Enables bespoke bonding patterns, without compromising performance or build time.

VBrick delivers long-term savings through its durability, ease of installation, and reduced need for repairs. It aids construction efficiency without sacrificing quality or aesthetics, making it a practical solution for both residential and commercial applications.

Product Features & Benefits:

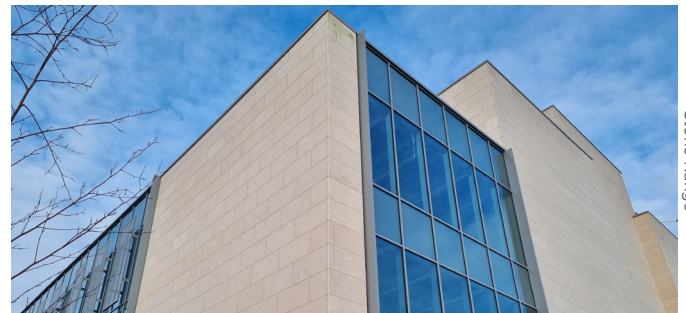
- Tested to the latest UK standards
- 60 year design life durability as certified by Lucideon
- One piece corners
- Interchangeable stretcher and vertical soldier tracks
- Brick matching service
- Cutting and rectification service



Cut and grooved slips coming off the brick cutting line



Handmade Range - Bespoke Blend



Stone Range

Sizes

- Handmade, Waterstruck & Extruded:
- 215mm x 65mm x 28mm (T2)
 - 327mm x 50mm x 28mm Linear (T2)
 - Stone available in metric brick size
 - Ashlar available in 215mm x 440mm

Thickness

- Handmade, Waterstruck & Extruded: 28mm
- Stone: 28-30mm

Finishes

- Brick

VBrick

Brick slip cladding system

VBrick CWCT accredited test rig

Mechanically secured brick slip system:

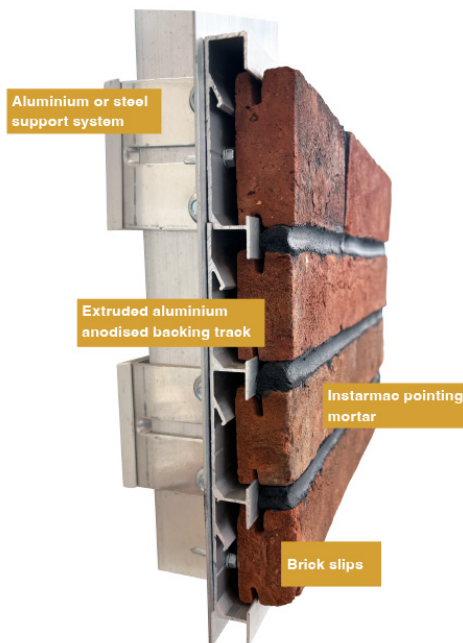
Developed by highly experienced experts in brick slip innovation, the VBrick system is the result of years of industry knowledge and hands-on development. It benefits from a flat rear surface, enabling quicker installation and provides ease of fire protection application.

Dimensions:

Handmade, Waterstruck & Extruded bricks:
215mm x 65mm x 28mm (T2)
327mm x 50mm x 28mm Linear (T2)
Stone available in metric brick size
Ashlar available in 215mm x 440mm

Pointing Mortar:

Instarmac Limepoint Plus has been specifically tested with VBrick and is available in 14 colours to complement or contrast the brick finish.



Handmade Range

Handmade brick slips are made by pressing or throwing clay into moulds by hand. This manual process gives each brick slip a slightly different shape, texture, and colour, which adds to their charm and aesthetic appeal. This traditional method allows for customisation in size and shape, making them a popular choice for projects needing a specific aesthetic or when matching reclaimed bricks.

Extruded Range

The clay mix is pushed through a die (a VBrick shaped opening) in an extrusion machine. This forms a continuous column of clay with a consistent cross-section—often rectangular or slightly textured to mimic real bricks. This hardens the clay, giving the slip its strength, durability, and final colour. Some slips may be glazed, textured, or coloured post-firing, others are left natural for a traditional look.

Waterstruck Range

Waterstruck bricks are made using a traditional “soft mud” process, excess clay is struck off, giving the bricks their distinctive textured appearance and rustic aesthetic. This method, which omits the use of sand in the moulding process, is what gives waterstruck bricks their unique, slightly irregular look and feel.

Stone Range

The natural stone slabs are carefully selected from established stone quarries featuring many different colours, textures and stone types are available with limestone being the most popular. The stone is calibrated to ensure correct tolerances are achieved for the system connection, the 28-30mm thick stone is then kerfed (grooved) for the mechanical fixing of the stone to the horizontal track. Following installation of the stone, the slips are then pointed using Instarmac specialist pointing mortar as specified.

Handmade Range

- 15 colours to choose from

Extruded Range

- 16 colours to choose from

Waterstruck Range

- 12 colours to choose from

Stone Range

- 10 colours to choose from

Parklex Prodema

Wood veneer cladding panel



NATURCLAD - W

Fundermax

HPL cladding panel range



Fundermax Compact Exterior Panels

Timeless Wood, Engineered Excellence. Panels with natural timber texture for facades.

Thanks to Parklex Prodema's exterior facade panels, natural maintenance-free wood boards and supertexturised panels can be fitted to ventilated facades.

These boards are highly resistant to extreme atmospheric agents such as sunlight and pollution.

Parklex Prodema panels maintain their appearance and high-quality standards without any further maintenance, eliminating the need for additional care.

Parklex Prodema has an exclusive composition for its products and creates beautiful panels with high standards of quality and durability.

Parklex Prodema panels with colour feature a natural timber texture while maintaining an outstanding resistance to atmospheric agents and requiring no maintenance.

The natural variation between every panel is Parklex Prodema's strength, mirroring the appearance of natural wood.

Product Features & Benefits:

- Weather resistant
- Resistance to extreme atmospheric agents
- Super texturised thanks to real wood veneer
- UV-ray resistant tone
- Maintenance-free HPL panels
- Complete installation system

Sizes

- 2440mm x 1220mm
- 2700mm x 1220mm

Thickness

- Ranging from 6mm to 22mm

Finishes

- Smooth
- Super Textured
- Matt
- Natural Wood

VIVALDA supplies all Fundermax external cladding panels range that includes 3 different models accordingly to the surface finishes: Fundermax Max Exterior F-QUALITY, Max Exterior NG/NT and Fundermax Max Exterior HEXA.

Fundermax Max Exterior panels are duromer high-pressure laminates (HPL) with extremely effective weather protection. This weather protection results from the use of double-hardened acrylic polyurethane resins. These cladding panels are produced in lamination presses that generate great pressures and high temperatures. Fundermax Max Exterior panels are labelled with the CE-Mark necessary for their use in building applications.

Fundermax Max Exterior is not only a facade panel for rear ventilated facades. The properties of the panel also qualify it for all other outdoor cladding applications.

Fundermax Max Exterior cladding panels consist of lengths of natural fibre – about 65% of the weight of the boards – and synthetic resins. The panels do not contain organic halogen (chlorine, fluorine, bromine etc) compounds. They contain neither asbestos nor wood preservatives (fungicide, pesticide etc) and are free from sulphur, mercury and cadmium. The precisely managed production processes have no negative effects whatsoever on the environment.

Product Features & Benefits:

- Scratch & impact resistant
- Solvent resistant
- Easy to clean
- Extremely weather resistant
- Easy to install
- Double hardened

Sizes

- 4100mm x 1300mm
- 465mm x 420mm*
- 920mm x 420mm*
- 2800mm x 1300mm
- 4100mm x 1300mm
- 4100mm x 1850mm
- 4100mm x 1840mm
- 3580mm x 1580mm
- 2800mm x 1840mm

Thickness

- Ranging from

Finishes

- 6 finishes to choose from

One stop shop

Our supplier partners

One stop shop:

Ask our knowledgeable VIVALDA branches for information & pricing for your requirements for fixing systems, accessories and building boards. As cladding specialists, we can guide you from elevation drawing stage right through to labelling and palletising of your required cladding panels.

Framing:

We offer a choice of systems & guide you to the most suitable fixing methods. The fixing system manufacturer will then be able to calculate a safe and robust method which our teams can then cost up for you.

Fire Barriers:

We can supply a wide range of market leading class 0 and class 1 fire protection building boards. With wide-ranging qualities, characteristics and the ability to withstand high temperatures these boards are suitable for many different applications.

Building Boards:

We can deliver a wide range of general-purpose building boards including Moisture Resistant Boards, Fire Protection Buildings Boards, Decorative Fire Protection Boards, CP Boards, Direct Render Boards, Multipurpose boards, Cement bonded pallet boards and Calcium silicate boards for many different applications.

Insulation:

We can meet your supply needs with our vast leading range of insulation boards, with so many choices, ask our experienced team as they can advise what options can save you time and money & if applied to the whole through wall build to achieve the best insulation, acoustic and aesthetic result in one design.

Fixings & Accessories:

We offer all the accessories required to fit any brand of exterior cladding panel, including gaskets, profiles, vents, corners, colour matched torx screws and rivets, joints, edge finishes, hangers, rails and adhesive systems.

A selection of brands we work with:

 **EQUITONE**
by etex

 **CEDRAL**
by etex

 **PLASTESTRIP**

 **JamesHardie™**

 **SFS**

 **SWISSPEARL**

 **MetSkin**
ALUMINIUM CLADDING

 **TONALITY®**
NATURAL FACADES

 **Rockpanel®**

 **TRESPA®**

 **Wraptite**
Airtightness simplified

 **VALCAN**
The Defining Standard

 **SIDERISE®**

 **viroc**
by investwood

 **VBrick**

 **FORTIS**
composite panels

 **FSi Promat**

 **fermacell®**

 **siniat**

 **Mainline**
The Perfect Colour Match

 **KEMWELL**

 **Kingspan®**

 **NVELOPE**
MAKING CLADDING HAPPEN

Composite Panels

Our vast offering of products include:

- Square edge infill panels
- Top hat panels
- Corner panels
- Fascias and soffits
- Window cills
- Flashings and trims
- Column casing / post covers

Production

All our panels are factory produced to the highest standards with regular inspections at each stage of the manufacturing process. VIVALDA's commitment to quality inspection and high standards in the production environment means our composite panels leave our site in excellent condition, ready for installation.

Warranty

For your reassurance, VIVALDA offers a 10 year warranty on the bonding process, to cover against delamination. For each component element of the composite panel, depending on the material used, the component manufacturer warranty will apply. Please speak to your VIVALDA representative when enquiring.

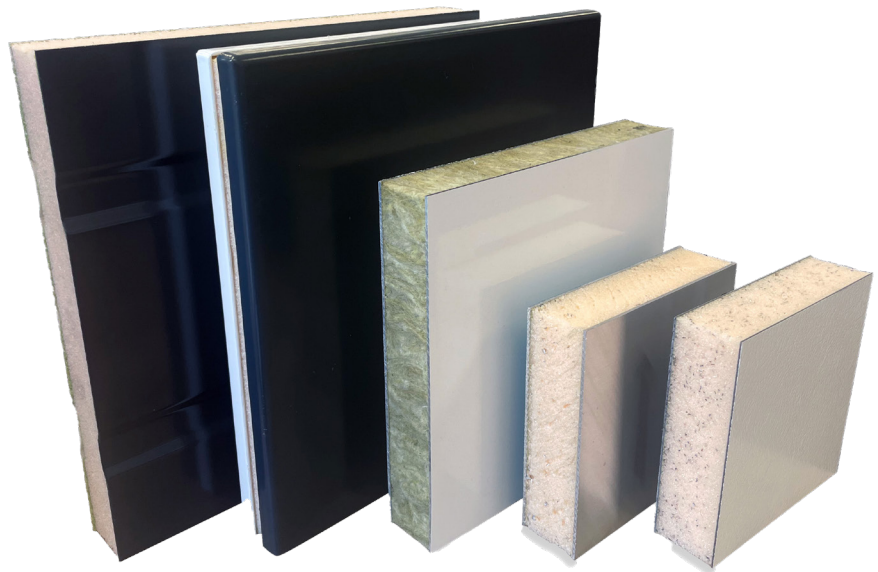
Our diverse offering of components include:

Face materials

- Trespa - High-Pressure Laminate (HPL)
- Polyester Powder Coated Aluminium (PPC)
- Plastisol - Colour Coated Steel
- Glass Reinforced Plastic (GRP)
- Steni - Stone Aggregate
- Alulap

Insulation

- Polyfoam XPS
- Lamella - Mineral Fibre
- Polyisocyanurate (PI)
- Polyurethane (Pu)
- Phenolic
- Solid Timber



All the market leading brands



In-house fabrication



On-site training & assistance



Nationwide coverage

Fortis A2

Composite Panels



Our panels are tested to BS EN1301-1: 2018 and achieve A2-s1,d0.

VIVALDA manufacture fire-rated composite panels to suit all glazing systems. Each panel is built with a fire-safe, non-combustible core of Lamella (mineral fibre) optimising performance and helping to prevent the spread of fire within a building.

Fire-rated infill panels can be colour-matched to suit the surrounding facade or glazing system.

Our A2 rated panels are available in thicknesses from 28mm to 150mm and can be rebated to make them suitable for all glazing systems and curtain walling.

Comprising a Lamella mineral wool core and a 1.5mm thick aluminium sheet to both faces, each panel is polyester powder coated to achieve a wide range of colour and finish options.

Vivalda has seen demand increase for fire-rated products, typically to replace potentially flammable panels in existing buildings with the safe A2 rated alternative. The product is designed to meet this demand and provide a safe and reliable solution for building refurbishments.

Fire-rated infill panels are crucial components in construction, particularly in structures where fire safety is paramount. These panels serve as barriers, containing fires within designated areas and preventing them from spreading rapidly playing a key part in ensuring fire safety.

Efficiency in their installation, combined with high fire safety standards and design flexibility, is essential for ensuring both structural integrity and aesthetic appeal.

VIVALDA manufacture fire-rated composite panels, Fortis A2 to suit all glazing systems. Each panel is built with a fire-safe, non-combustible mineral fibre Lamella core optimising performance and helping to prevent the spread of fire within a building.

Panels often sit in non-vision curtain walling areas to help conceal the structure that lies between floors in buildings adding interest and continuity to the building facade. Fortis A2 panels can be colour-matched to 1000s of RAL colours to suit the surrounding facade or glazing system.



Product Features & Benefits:

- A2 Fire Rated
- Manufactured to individual specification
- Low maintenance
- Available in 1000s of RAL & B.S colours
- Designed to suit your glazing system
- Create bespoke panels



Fortis A2

Sizes

- Up to 4000mm x 2000mm

Thickness

- 6mm - 150mm

Finishes

- Matt
- Satin
- Gloss

Bespoke Metal

Almondvale Retail Park

Finish Your Building Envelope Design with VIVALDA's sister company, MSP Facade Solutions.

When it comes to creating a building envelope that is not only functional but also aesthetically appealing, MSP offer a comprehensive range of metal cladding products designed to meet the needs of any project.

Whether you're working on a residential or commercial building, our diverse selection ensures you'll find the right solutions tailored to your unique specifications.

Wide Range of Features for Every Project:

At MSP, they specialise in providing a variety of building features fabricated from aluminium sheets and powder coated to the desired colour performance level.

Each of these elements is designed to seamlessly integrate into the architecture, enhancing both the performance and the visual appeal of the building.

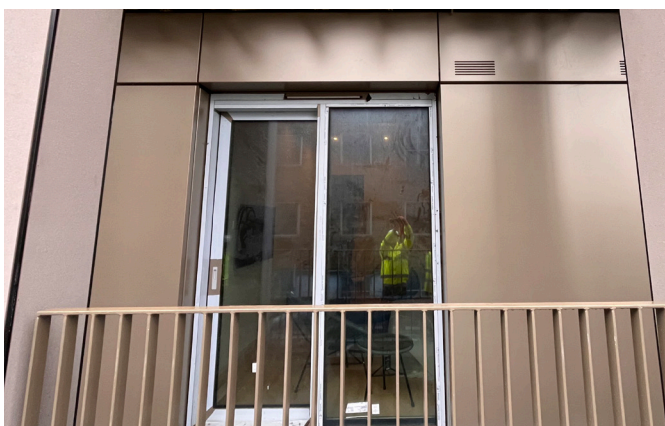
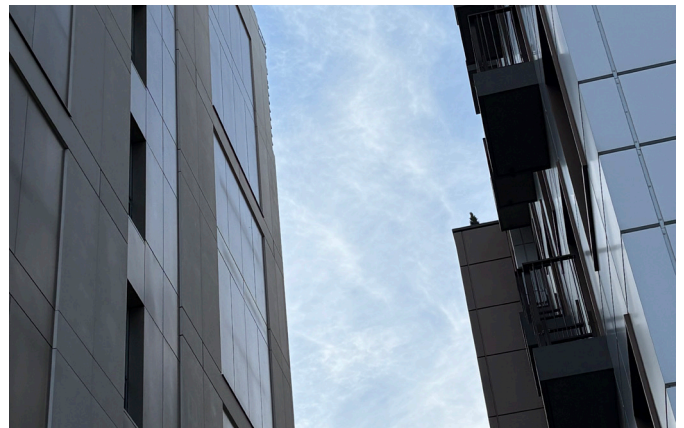
Bespoke Metal Solutions by MSP Facade Solutions:

As a sister company to VIVALDA, MSP Facade Solutions has over 50 years of expertise in designing and manufacturing custom metal products for building facades. Their skilled metalwork and technical design knowledge ensure that every project receives the highest quality bespoke solutions.

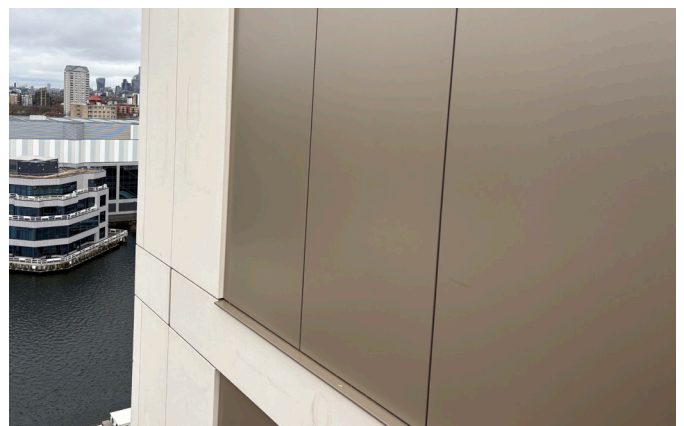
From small-scale residential buildings to large commercial structures, MSP Facade Solutions has supported thousands of projects with durable, custom-designed aluminium panels. Their commitment to craftsmanship, technical expertise, and customer satisfaction has made them a trusted partner in the industry.

Product by MSP Facade Solutions:

- Window pods
- Flashings
- Features
- Spandrel panels
- Louvre panels
- Sills
- Profiles & trims
- Welded support pieces
- Bespoke brackets & angled rails
- Copings
- Cappings
- Bespoke formed metal pieces
- Guttering
- Available in a range of thickness from 1mm to 4mm for formed aluminium
- Powder Coated in-house



Canary Wharf



Seison Way

Bespoke Metal



Birmingham Women's Hospital

With MSP's years of experience in aluminium design and manufacturing, their products are built to stand the test of time, providing long-term durability and performance. Their commitment to quality ensures that your building envelope will not only look exceptional but also function optimally in all conditions.

Tailored Solutions for Every Need:

Whether you're in the early stages of a building project or putting the finishing touches on a facade, VIVALDA and MSP Facade Solutions offer the products and expertise to create a stunning and high-performing building envelope. From custom metal design to a full suite of architectural features, you can rely on us to deliver the perfect solutions for your project.

MSP Facade Solutions offers a selection of essential products elements that help protect and finish your building facade beautifully:

Flashings: Key for water management and ensuring the building's exterior is protected from the elements. Ideal for protecting vulnerable points and providing a seamless finish.

Louvre Panels + Doors: Vital for ventilation and shading while adding a sleek, modern aesthetic to any building. An aesthetic solution to service area enclosures and access areas.

Window Pods: Custom-designed to support windows while offering a finished look, integrating seamlessly with the overall design.

Guttering: Essential for managing rainwater flow and completing the facade for a cohesive, clean appearance. High-performance, custom gutters designed to complement the building's facade.

Features: Tailored elements that enhance both form and function in the building's design, designed to fit 'as-built' requirements on site

Spandrel Panels: Designed to provide both aesthetic value and functional support for the overall structure.

Privacy Screens: Precision-engineered perforated panels that offer ventilation control and stylish architectural detail.

Birmingham Women's Hospital



Birmingham Women's Hospital



Contact our sales team for all bespoke metal solutions:

sales@mpscot.co.uk
01236 729591



Delivery & Logistics

VIVALDA's Owned Fleet

Here at VIVALDA, we operate a variety of different vehicles to meet your delivery requirements. Ranging from our 26-tonne curtain siders equipped with truck-mounted-forklifts for larger loads with kerbside delivery, to 7.5 tonne curtain siders for inner-city sites with limited space & flatbed vehicles for crane off-loads.

First Class Service:

VIVALDA own and operate a fleet of Euro VI and ULEZ compliant vehicles, enabling an efficient service direct to site. We pride ourselves in providing a first-class service to customers.

Our specialised fleet is equipped with the latest telematics to allow our staff to give accurate ETAs and monitor the on-board safety cameras for the drivers & customers safety.

Our experienced drivers are provided with specialised equipment to receive on-the-go updates and live re-routing if required, they are readied with full PPE to fulfil site requirements. They are trained for safe off-loading and liaising with banksmen and contractors when arriving on site.

Efficient Logistics:

We aim to deliver an efficient service from factory to site, offering professional pallet wrapping and panel labelling facilities, making installation on-site both cost and time effective.

Our delivery runs are planned at least a day in advance using the most efficient routes to ensure that time in traffic and CO₂ emissions are kept to a minimum. Our teams are able to update on delivery progress throughout the day and drop off anywhere on site using off-load facilities or using flatbed vehicles for crane off-loading.



Require support on your next project?

If you require more information on our products or services, or would like to speak to our team about your project; our nationwide teams are here to help.



Contact

VIVALDA offer a fast, efficient and reliable nationwide service. We have central support services located in Birmingham and fabrication branches in London, Birmingham, Manchester, Hull, Scotland & Ireland. We employ over 150 staff across the 6 sites, and deliver with our own transport fleet and our own drivers. We offer a range of vehicles and off-loading facilities suitable for site delivery.

Head Office

95 Aston Church Road
Aston
Birmingham
B7 5RQ

sales@vivalda.co.uk
0121 328 9381

London

99 Victoria Road
Park Royal
London
NW10 6DJ

saleslondon@vivalda.co.uk
0208 963 9999

Birmingham

95 Aston Church Road
Aston
Birmingham
B7 5RQ

salesbirmingham@vivalda.co.uk
0121 326 7858

Manchester

14 Admiral Business Park
73 Cawdor Street
Eccles, Manchester
M30 0ZW

salesmanchester@vivalda.co.uk
0161 865 5551

Hull

Courtney Street
Mount Pleasant
Kingston Upon Hull
HU8 7QF

saleshull@vivalda.co.uk
01482 310865

Scotland

1-9 Telford Road
East Lenziemill Industrial Estate
Cumbernauld
G67 2AX

sales@vivaldascotland.co.uk
01236 433233

Ireland

Unit 1, Naas Industrial Estate
Naas,
Co. Kildare
W91 XAK6

sales@vivaldaireland.ie
(+353) 045 409 509



VIVALDA

vivalda.co.uk