

Wraptite

AIRTIGHTNESS

WHY CHOOSE WRAPTITE?

Wraptite combines the best properties of a vapour permeable membrane and airtight membrane in one innovative, affordable self-adhering product. With BBA certification for a comprehensive range of wall and roof constructions and compatibility with multiple substrates, this high-performance air barrier solution can be employed on projects from domestic scale timber frame to large steel framed high rise and everything in between.

Wraptite fully bonds (no mechanical attachment) to almost any substrate for improved airtightness and ease of installation, negating requirement for sealants or tapes.

Wraptite airtight membrane prevents lateral air movement enhancing the buildings thermal performance. With an Sd value of 0.039m, Wraptite provides high vapour permeability in a commercial quality, self-adhered, airtight breathable membrane.

Wraptite is unsurpassed in performance.

DRYING CAPACITY

Wraptite allows damp sheathing to dry quickly and moisture vapour to escape. This ensures good indoor air quality whilst reducing incidence of mould, mildew, condensation, timber distortion and metal corrosion.

ADHESIVE DURABILITY & COST EFFECTIVENESS

- **No primer required**
- Tough facer laminate resists punctures and tears during construction
- Lightweight and easy to install
- Manufactured rolled goods ensure consistent properties and performance
- Wide service temperature range

MULTIPLE SUBSTRATE COMPATIBILITY

- Exterior Gypsum Sheathing
- Fibre Cement Sheathing
- Calcium Silicate Sheathing
- Cement Particle Sheathing
- Most rigid insulation
- Pre-painted steel
- OSB
- Precast concrete
- Concrete block
- Aluminium (painted or mill finish)
- Cast-in-place concrete
- Galvanized metal
- Rigid vinyl
- Steel
- Plywood



Wraptite roll with PET release liner



Do not install Wraptite in adverse weather conditions. Wraptite is not designed for permanent exposure. Contact A. Proctor Group technical services for UV exposure limits: technical@proctorgroup.com.



Water
Resistant



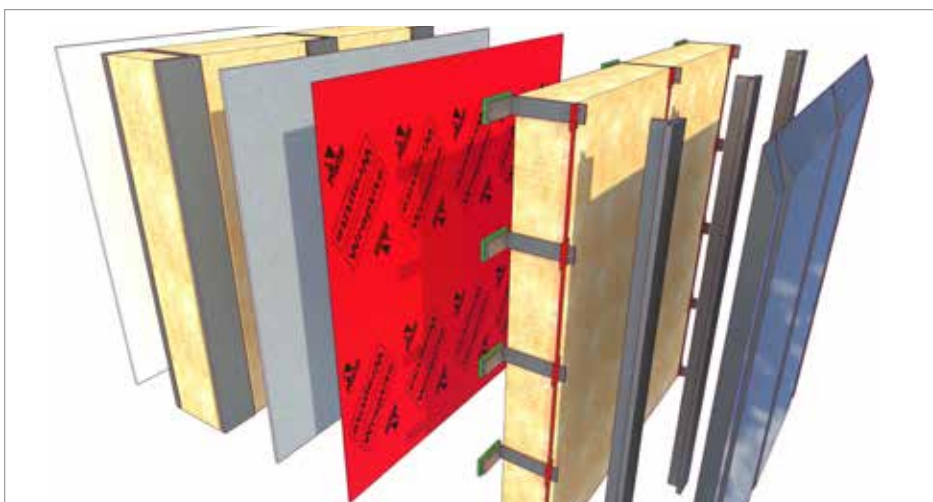
Puncture & Tear
Resistant



Flexible



No VOC's



KEY BENEFITS OUTLINED

- > **No primer required**
- > Self-adhered
- > Airtight yet vapour permeable
- > BBA Certified
- > Water resistant
- > Resilient composition, which resists punctures and tears during construction
- > Flexibility, facilitating ease of application and detailing
- > No VOC's
- > Creates airtight seal

WRAPTITE PHYSICAL PROPERTIES

PROPERTY	TEST/STANDARD	RESULT
Roll Length	-	50m
Full Roll Width Tape Widths	-	1.5m 75mm, 100mm, 150mm, 300mm (other sizes available on request)
Roll weight		24kg
Nominal Thickness	Calibrated Deadweight Micrometre	0.65mm
Basis Weight	Electronic Weigh Scale	292 g/m ²
Installation Temperature	-	-10°C to +60°C
Service Temperature	-	-40°C to +100°C
Water Penetration	EN 1928 : 2000 Method A	Class WI (before ageing) Class WI (after ageing)
Resistance to Penetration of Air	EN 12114	0.01 m ³ /m ² .h.50 Pa
Water Vapour Permeability	EN ISO 12572 (C)	Sd 0.039m
Water Vapour Transmission	BS 3177:1959	893 g/m ² .24hr
Peel Adhesion	EN 1939	5.01 N/10mm
Tensile Strength	EN 12311-1	Mean MD 417N Mean XD 252N
Tear Resistance	EN 12310-1	Mean MD 412N Mean XD 286N
Dimensional Stability	EN 1107-2	MD +0.3% XD +0.1%
Reaction to Fire	EN 11925-2 BS EN 13501-1	Class B-s1,d0 ^{1,2}
Flexibility at Low Temperature	EN 1109	No cracks at -40°C

¹tested over 12mm calcium silicate board / fibre cement board as per BS EN 13238:2010.

²free hanging. It is unlikely that any breathable membrane in this application, including Wraptite would be free hanging due to either the self-adhered backing in Wraptite or the tapes used in installing non-self-adhered membranes. This test result is included to allow product specifiers to objectively compare Wraptite to other membranes tested using this method, and does not constitute a recommendation that Wraptite is installed free-hanging. Clients are urged to discuss their individual project with the Technical Department to ensure the suitability for any given project taking into account substrate, building height and boundary proximity.

All tests carried out to EN 13859-2 standard.



Wraptite used in Wembley Park, London



Wraptite used in Offsite Modular projects



Wraptite used in Kent Road, Birmingham



in association with:

VIVALDA
bringing construction to life®

www.vivalda.co.uk
sales@vivalda.co.uk

Birmingham | 0121 326 7858

London | 02089 639 999

Manchester | 0161 865 5551

Hull | 01482 310 865

Scotland | 01236 433 233

Ireland | +353 (0)45 409 509