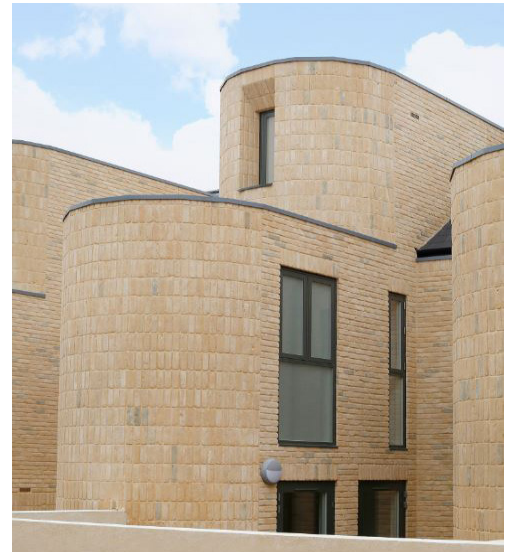


# VETAbric

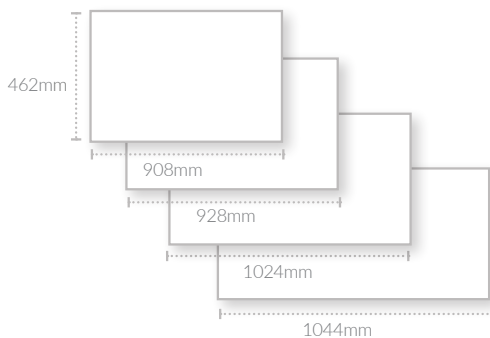
## brick slip panels



**VETAbric by VETA France, have created the thinnest brick slip cladding solution with an adaptable insulated backing panel. Offering a huge range of brick colours and texture options, VETAbric is a lightweight rigid solution, making it easy to install in all weather conditions.**

VETAbric offers cut sections of a brick or 'slips' as they are known, bonded at high temperatures to a fire resistant backing panel. The complete system includes cladding panels in flat or return pieces, fixings, starter profiles and end profiles, with a wide choice of different mortar types to achieve the required aesthetic finish.

### Sizes\*



### Colours\*\*



The VETAbric range has a vast choice of more than 100 manufactured brick designs. Choose from hand moulded bricks, mechanically made or glazed bricks. Our brick slip ranges are sourced from leading manufacturers including Wienerberger, Feldhaus, Les Rairies, Nelissen, and Röben.

\*All VETAbric panels carry a thickness of 25mm, with an approximate sq.m weight of 25 - 30kg, depending on the facing. For a full list of dimensional variances, including formed panels, please contact Pura Facades.

\*\*Colours shown are indicative of the shades available, please request a sample for an accurate colour reference.

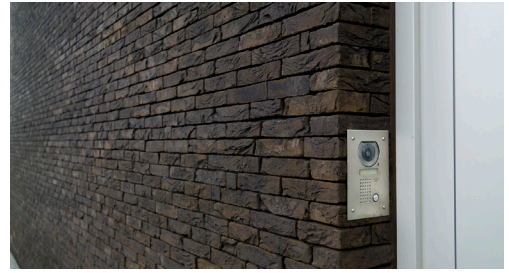


VETA France manufacture the only modular all-in-one brick slip system that separates the brick facing from the insulation. This creates a lightweight and easy to install facade option, fully adaptable to different insulation requirements. Pura Facades exclusively supply the adaptable VETAbric system in the UK. Contact Pura Facades for more information.



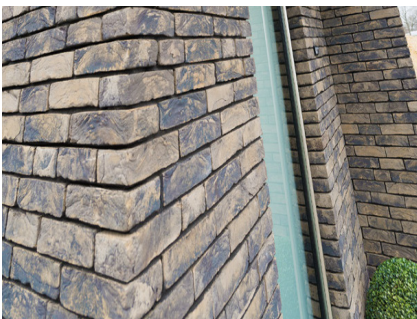
# VETabric+

seamless brick slip panels



VETabric+ is a unique click system to create seamless brick panels. By eliminating the traditional grouting process, the overall look is pure and dirt free, with slimmer joints and slimline bricks.

- Thinnest brick slip panels at 25mm
- Wide range of brick finishes
- Adaptable panel sizes and formats
- Dry, 'all weather' system for fast and easy installation
- Corner, soffit and return panels available
- Excellent thermal resistance
- Seamless brick panels thanks to unique click system
- Slimline bricks, with thinner joints



**pura**  
facades

To request a sample please email: [ask@purafacades.co.uk](mailto:ask@purafacades.co.uk) or ring 0203 269 2052

[ask@purafacades.co.uk](mailto:ask@purafacades.co.uk) | [www.purafacades.co.uk](http://www.purafacades.co.uk)