

W

E

d

O

r

e

NATURAL WOOD VENEERS  
FOR INTERIOR SURFACES

**Prodema**<sup>®</sup>  
Made to last wooden Products

interiors by Prodema<sup>®</sup>



C o l l e c t i o n

# *Neptuno*

Humidity  
is not a problem

With Its Bakelite core for indoor cladding,  
specially designed for wet environments.

## Colours

**Prodema** panel veneers are made with natural wood so the tone and graining of the samples are a mere guide. The surface composition of the **Prodema** panels may also vary depending on the application, so there may be differences in tone for the same colour in the different families of panels.

### *Flat cut wood*



Changes in tone and grain between strips is particularly marked in the cases Eucalyptus and Teak so it is advisable to consult with the factory.

# Rotary cut wood

## Ayous Veneer



Natural A\*



Dark brown\*\*



Light brown\*\*



Pale\*\*



Cream\*\*



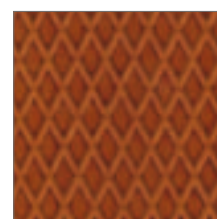
Mocca\*\*



Black wood\*\*

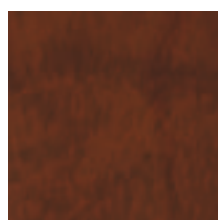


Mint\*\*

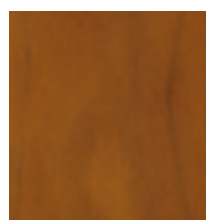


**Large Diamond Engraving:**  
Available in Light brown,  
Rustic, Pale, Mocca, Cream,  
Deep brown, Dark brown,  
Black wood, Mint and Ice grey  
≥ 10 mm.

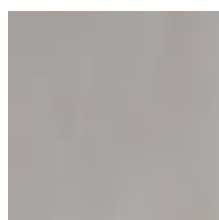
## Okume Veneer



Deep brown\*\*



Rustik\*\*



Ice grey\*\*

Would you like a sample of some of our products?

Simply send an email to:  
prodema@prodema.com  
and we will get it to you.

[www.prodema.com](http://www.prodema.com)

\* **Neptuno** Texture finish (raised).  
\*\* **Neptuno** Smooth finish (smooth).



C o l l e c t i o n

# *Proligna*

P o d u c t s   w i t h   a   c o r e

The most extensive range of colours and interior cladding finishes for dry environments.

## Colours

**Prodema** panels veneers are made with natural wood so the tone and grain of the samples are a mere guide. The surface composition of the **Prodema** panels may also vary depending on the application, so there may be differences in tone for the same colour in the different families of panels.

### *Flat cut wood*



Changes in tone and grain between strips is particularly marked in the cases Eucalyptus and Teak so it is advisable to consult with the factory.

# *Rotary cut wood*

## *Ayous Veneer*

---



Dark brown



Light brown



Mocca



Black wood



Cream



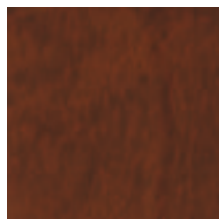
Honey



Natural A

## *Okume Veneer*

---



Deep brown



Almond




Ice grey

Would you like a sample of some of our products?

Simply send an email to:  
[prodema@prodema.com](mailto:prodema@prodema.com)  
and we will get it to you.

[www.prodema.com](http://www.prodema.com)

All **Prologna** finishes are Texture (raised)



C o l l e c t i o n

# *Auditorium*

L i s t e n   t o   t h e   s i l e n c e

Drilled panels and with a core composed of a wood and resin isotropic mass for projects with acoustic needs.



**Colours**

**Prodema** panel veneers are made with natural wood so the tone and graining of the samples is a mere guide. The surface composition of the **Prodema** panels may also vary depending on the application, so there may be differences in tone for the same colour in the different families of panels.

*Flat cut wood*



Changes in tone and grain between strips are particularly marked in the cases Eucalyptus and Teak so it is advisable to consult with the factory.

# Rotary cut wood

## Ayous Veneer

---



Dark brown



Light brown



Mocca



Black wood



Cream



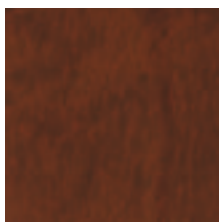
Honey



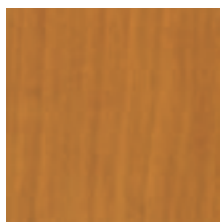
Natural A

## Okume Veneer

---



Deep brown



Almond



Ice grey

Would you like a sample of some of our products?

Simply send an email to:  
[prodema@prodema.com](mailto:prodema@prodema.com)  
and we will get it to you.

[www.prodema.com](http://www.prodema.com)

All Auditorium finishes are Texture (raised).



C O L L E C T I O N

# *Supra*

**T H E S U P R A S O L U T I O N F O R  
C O M M E R C I A L A R E A S**

Plywood core panel impregnated with thermosetting phenolic resins for heavy duty flooring

## Colours

**Prodema** panel veneers are made with natural wood so the tone and graining of the samples is a mere guide. The surface composition of the **Prodema** panels may also vary depending on the application, so there may be differences in tone for the same colour in the different families of panels.

### *Flat cut wood*



Changes in tone and grain between strips is particularly marked in the cases Eucalyptus and Teak, so it is advisable to consult with the factory.

# *Rotary cut wood*

## *Ayous veneer*

---



Dark brown



Light brown



Mocca



Black wood



Cream



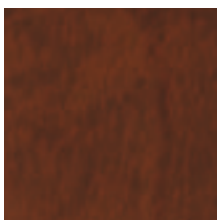
Honey



Natural A

## *Okume Veneer*

---



Deep brown



Almond



Ice grey

**Would you like a sample of some of our products?**

Simply send an email to:  
[prodema@prodema.com](mailto:prodema@prodema.com)  
and we will get it to you.

[www.prodema.com](http://www.prodema.com)

All **Supra** finishes are Super Matt (smooth matte)



C o l l e c t i o n

# *Laminium*

The best solution

## Colours

**Prodema** panel veneers are made with natural wood so the tone and graining of the samples is a mere guide. The surface composition of the **Prodema** panels may also vary depending on the application, so there may be differences in tone for the same colour in the different families of panels.

### *Flat cut wood*



Changes in tone and grain between strips is particularly marked in the cases Eucalyptus and Teak so it is advisable to consult with the factory.

## *Rotary cut wood* *Ayous Veneer*

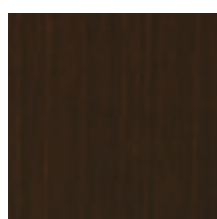
---



Dark brown



Light brown



Mocca



Black wood



Cream



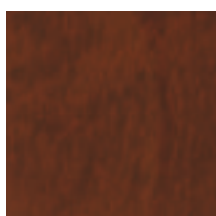
Honey



Natural A

## *Okume Veneer*

---



Deep brown



Almond



Ice grey

**Would you like a sample of some of our products?**

Simply send an email to:  
[prodema@prodema.com](mailto:prodema@prodema.com)  
and we will get it to you.

[www.prodema.com](http://www.prodema.com)

All **Laminium** finishes are Super Matt (smooth matte).



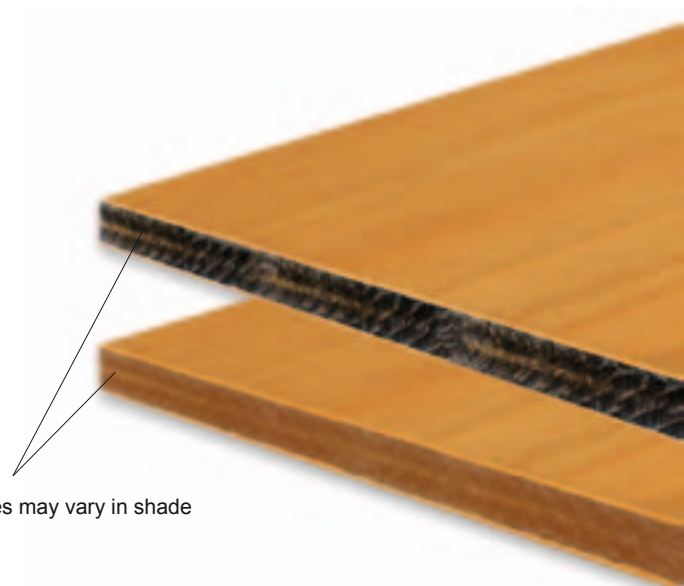
# ProdEX

exteriors by Prodema®

**ProdEX** (by **Prodema**), our new line of exterior cladding, is about to change the mindset in architecture on a global level.

Because with **ProdEX** (by **Prodema**) finally there is a range of composite wood, which synthesizes all the benefits of a material so noble, beautiful and versatile as wood, with the guarantee of performance and durability that our patented formula based on paper and resins offers.

Opening up a new world of possibilities to architects or quantity surveyors seeking a real alternative to cold, grey and mundane materials for cladding their buildings.



Edges may vary in shade



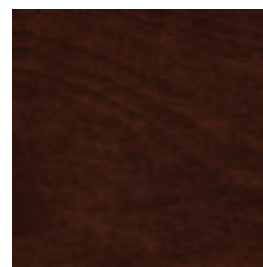
Light brown \*



Rustik \*\*



Pale \*



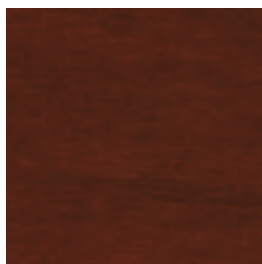
Mocca \*



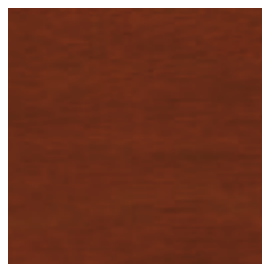
Mint \*



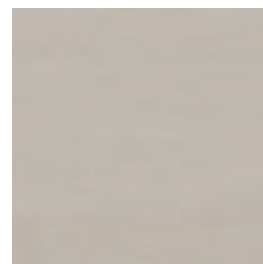
Cream \*



Deep brown \*\*



Dark brown \*



Ice grey \*\*

\* Ayous veneer

\*\* Okume Veneer

# rodri

interiors by Prodema®